

Safe Routes to School



Prepared for Simsbury Schools
June 7, 2011



Fitzgerald & Halliday, Inc.



*Simsbury Public Library
Simsbury, CT
June 7, 2011*

Tonight's Agenda

- SRTS Overview
- SRTS in Connecticut
- SRTS Plan
- Next Steps



SRTS Overview



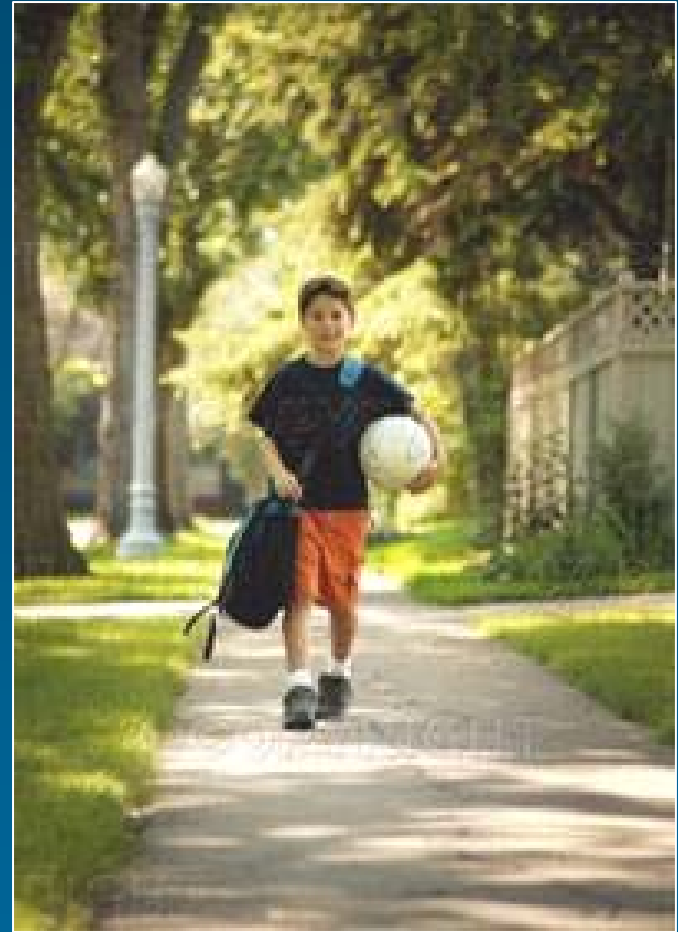
Fitzgerald & Halliday, Inc.



*Simsbury Public Library
Simsbury, CT
June 7, 2011*

Safe Routes to School

- 2005 federal legislation
- Encourage K-8 children to walk & bike to school
- Assess safety of travel routes
- Educate students, parents, and drivers
- Promote safe walking and bicycling



Why SRTS Matters

- Safety
- Health
- Transportation



IMPROVE QUALITY OF LIFE!



Fitzgerald & Halliday, Inc.



*Simsbury Public Library
Simsbury, CT
June 7, 2011*

SRTS Funding

- Construction projects (70-90% funds)
 - Construction of safety improvements
 - Within 1 mile of K-8 school
 - Must have a SRTS Plan
- Non-construction activities (10-30% funds)
 - Program activities to encourage walking and bicycling to school



SRTS in Connecticut



Fitzgerald & Halliday, Inc.



*Simsbury Public Library
Simsbury, CT
June 7, 2011*

Program Assistance

- Launched in 2009
- Will continue through 2014
- Free
- Online application at www.walkitbikeect.org



Program Assistance - Offerings

- SRTS overview presentation and Q&A
- Committee and champion assistance
- Walk audit support
- Mapping support
- Plan review and critique
- Bicycle education / rodeo
- Walking school bus/walk-to-school event
- Encouragement assembly



Program Assistance In CT

27 schools:

- Avon
- Bridgeport
- Cheshire
- Clinton
- Coventry
- Fairfield
- Haddam
- Plainfield
- Plainville
- Simsbury
- South Windsor
- Stratford
- Wallingford
- Waterbury
- West Hartford
- Weston



Program Assistance In CT

Walk audit:

- 19 schools
- Observe arrival / dismissal
- Engineering recommendations



Program Assistance In CT

Bicycle rodeo:

- Two schools
- Weekend event
- Must have SRTS Plan



Program Assistance In CT

SRTS overview presentation:

- Four schools
- Schools/communities unfamiliar with SRTS process

Bicycle education:

- One school
- Health and Wellness Fair
- Helmet safety



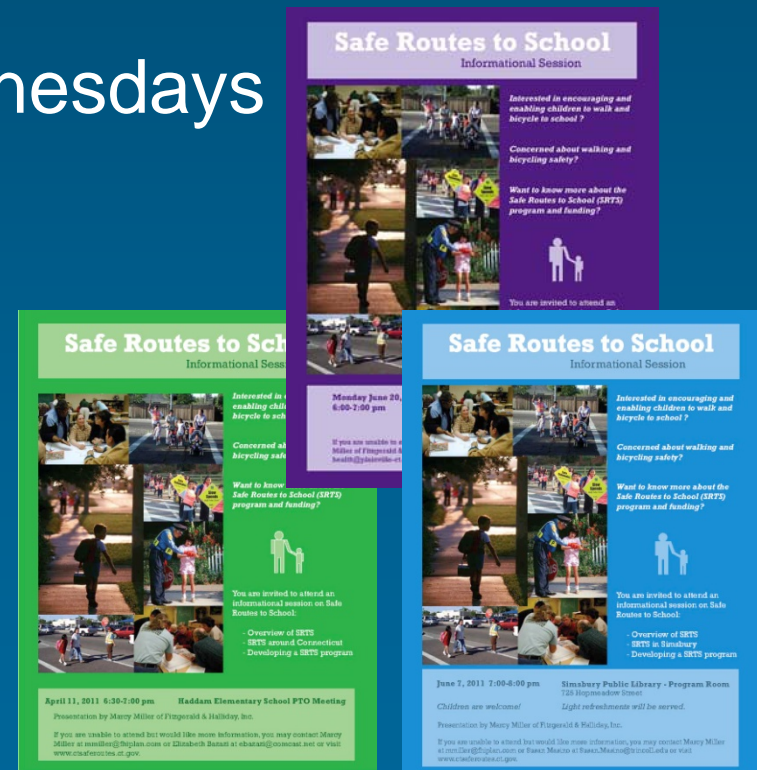
Program Assistance In CT

Educational / safety materials:

- One school
- Brochures for Walking Wednesdays

Flyer / promotional materials:

- Three schools
- For overview presentations



Local Assistance

- Henry James Middle School
- Tootin' Hills Elementary School
- Tariffville Elementary School



Local Assistance

- Henry James Middle School
 - Walk Audit in March 2010



Local Assistance

- Tootin' Hills Elementary School
 - Survey support
 - Educational brochure

SURVEY ABOUT WALKING AND BIKING TO SCHOOL
- FOR PARENTS -

Dear Parent or Caregiver,

Your child's school wants to learn your thoughts about children walking and biking to school. This survey will take about 10 - 15 minutes to complete. We ask that each family complete only one survey per school your children attend. If more than one child from a school brings a survey home, please fill out the survey for the child with the next birthday from today's date.

After you have completed this survey, send it back to the school with your child or give it to the teacher. Your responses will be kept confidential and neither your name nor your child's name will be associated with any results. Thank you for participating in this survey!

These first few questions gather some general background information. Remember, all information will be confidential, and no identifying information will be released.

1. What is the grade of the child who brought home this survey? (K - 5) _____ grade

2. Is the child who brought home this survey male or female? ☐ MALE ☐ FEMALE

3. How many children do you have in Kindergarten through 5th grade? _____ children

4. What is your ZIP Code? (please provide ZIP + 4 if known) _____ ZIP code
note: many utility bills will show your ZIP + 4

5. How far does your child live from school? choose one

<input type="checkbox"/> a. less than 1/4 mile	<input type="checkbox"/> d. 1 mile up to 2 miles
<input type="checkbox"/> b. 1/4 mile up to 1/2 mile	<input type="checkbox"/> e. more than 2 miles
<input type="checkbox"/> c. 1/2 mile up to 1 mile	<input type="checkbox"/> f. don't know

6. On most days, how does your child arrive at school and leave for home after school? (please use checkboxes per column)

Arrive at school	Leave for home
a. Walk	g. Walk
b. Bike	h. Bike
c. School Bus	i. School Bus
d. Family vehicle (only with children from your family)	j. Family vehicle (only with children from your family)
e. Carpool (only with children from other families)	k. Carpool (only with children from other families)
f. Transit (city bus, subway, etc.)	l. Transit (city bus, subway, etc.)
g. Other (please list mode, vehicle, station, etc.)	m. Other (please list mode, vehicle, station, etc.)

Page 1 of 3





Fitzgerald & Halliday, Inc.

*Simsbury Public Library
Simsbury, CT
June 7, 2011*

Tootin' Hills Survey Results

- 116 families responded
- 80 favor walking / biking
- Most walk / bike rarely, occasionally, or never
- Why:
 - Too much traffic
 - Uncomfortable with students walking alone
 - Don't know a safe route



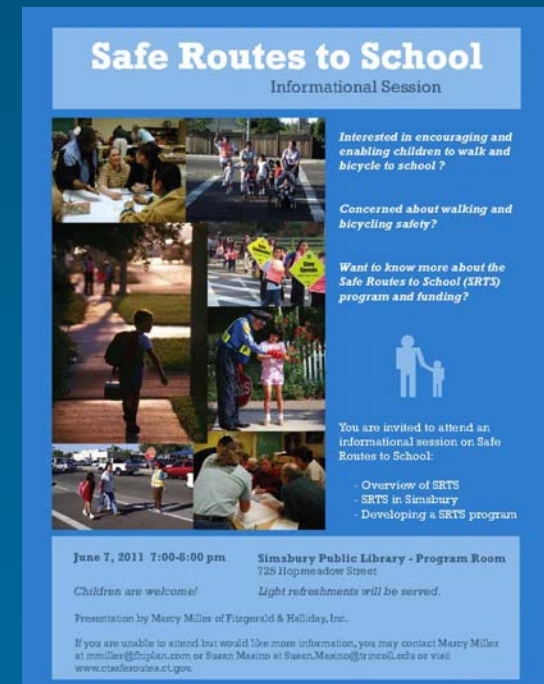
Tootin' Hills Survey Results

- What is needed to make walking / biking to school possible:
 - Sidewalks (over 2/3 of responses)
 - Bike lanes (over 1/2 of responses)
 - Less than 1/2 said:
 - Crosswalks
 - Crossing guards
 - A regular walking school bus



Local Assistance

- Tariffville Elementary School
 - Townwide SRTS overview presentation
 - Flyer



Other CT SRTS Activities

Walk It Bike It Contest:

- Classroom contest
- “Walk” or “bike” the perimeter of CT
- Accumulate mileage by walking or biking to school
- www.walkitbikeitct.org



Walk It Bike It Contest

- Launched in 2009
- Walked / biked 11,000 miles
- Hartford school winner
 - Capital event
 - Walk to School Day event
 - Prizes





Fitzgerald & Halliday, Inc.

*Simsbury Public Library
Simsbury, CT
June 7, 2011*

Construction Project Funding

- \$2M currently available
- \$150,000 - \$500,000
- Applications due August 2011
- No matching required (reimbursement)
- Eligible reimbursement activities are limited to construction items / activities
- Must have SRTS Master Plan in place



SRTS Plan Development



Fitzgerald & Halliday, Inc.



*Simsbury Public Library
Simsbury, CT
June 7, 2011*

SRTS Plan

- Summary of data collection
 - Map
- Short- and long-term solutions
 - The five E's



Data Collection

- Surveys
 - Parent
 - Student
- Audits/observations
- Traffic speeds/counts
- Accident/injury data
- School policies and procedures

NEIGHBORHOOD SITE AUDIT

The following neighborhood audit is designed to help you evaluate walking and bicycling conditions in your school's neighborhood by taking an inventory of intersections, streets and sidewalks. There are separate forms for evaluating intersections and mid-block crosswalks versus roadway segments. Please use only one form for each intersection or roadway segment. Make additional copies of the audit sheets to evaluate all of the neighborhood streets. Some information will need to be collected beforehand, such as average daily traffic counts provided by the local municipality and a base map of neighborhood streets.

Instructions:

Step 1: Establish a boundary for assessment:

On your base map, identify the school location and outline an area (or perimeter) from which children could walk or bicycle to school. A good rule of thumb is 1 mile in all directions from the school.

Step 2: Identify where students live:

On your base map, identify where students live. This could be done by having students mark their home locations on a large map with push pins, by using a GIS database (if available), or by using best estimates of parents and school staff.

Step 3: Identify projected walkable routes to the school:

Draw on the map and identify possible routes that children may follow to walk or ride their bikes to school. Try to identify a major route in each direction (north, south, east, west).

Step 4: Inventory of existing facilities:

Locate and inventory all major features within the one-mile radius. Locate streets, intersections, sidewalks, problem areas, and other security and safety items. Identify all of these items on the map with either text or symbols.

Step 5: Fieldwork:

Now, that you have completed the base mapping and initial analysis, it is time to go in the field. Using your initial analysis you can map an efficient course to evaluate all of the streets and major routes that you identified. Use the attached audit sheets to begin collecting information.

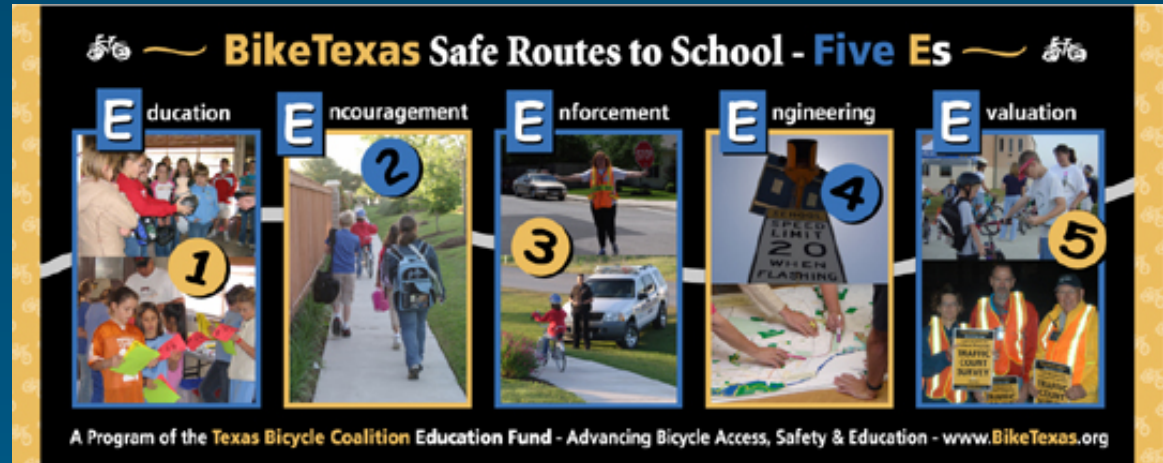
Step 6: Compile, prioritize and rank findings:

When your fieldwork is complete, organize your audits by highlighting the most important aspects noted by the audit team. List and rank these potential improvements in order of importance via safety and immediate need. Report the findings to the School Traffic Safety Team.



Solutions - The Five E's:

- Education
- Encouragement
- Enforcement
- Engineering
- Evaluation

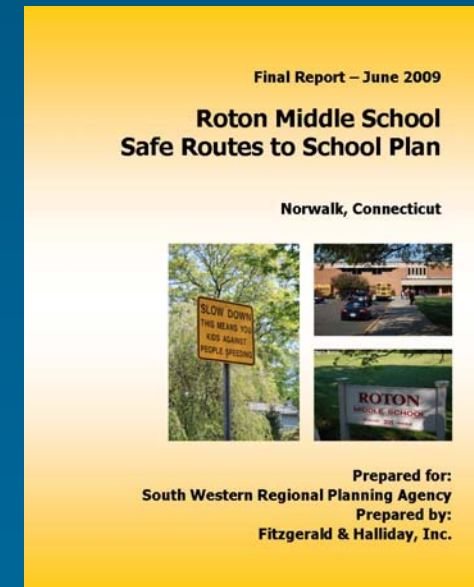
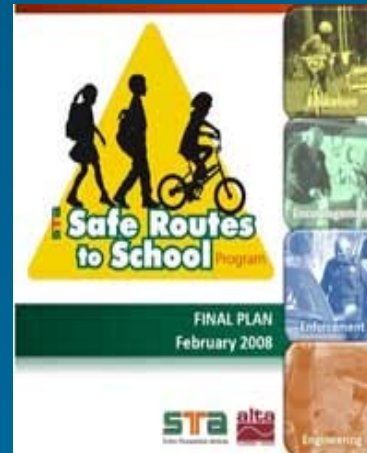


Next Steps



Moving Forward in Simsbury

- Decide if you want to pursue
- Learn more about developing a SRTS Plan
 - Follow up presentation



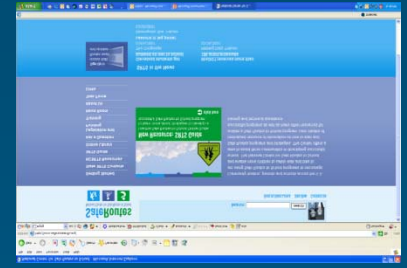
Moving Forward in Simsbury

- Create a committee or team
- Identify champion/Committee Chair
- Begin data collection
- Research / identify issues and potential strategies



For More Information

- National Center for Safe Routes to School -
www.saferoutesinfo.org
- CT Noninfrastructure Program information –
www.walkitbikeitct.org
- Sharon Okoye, CT Department of Transportation -
Sharon.Okoye@po.state.ct.us
- Marcy Miller, Fitzgerald & Halliday, Inc.
mmiller@fhiplan.com



Questions?

<http://safety.fhwa.dot.gov/saferoutes/>



Fitzgerald & Halliday, Inc.

*Simsbury Public Library
Simsbury, CT
June 7, 2011*